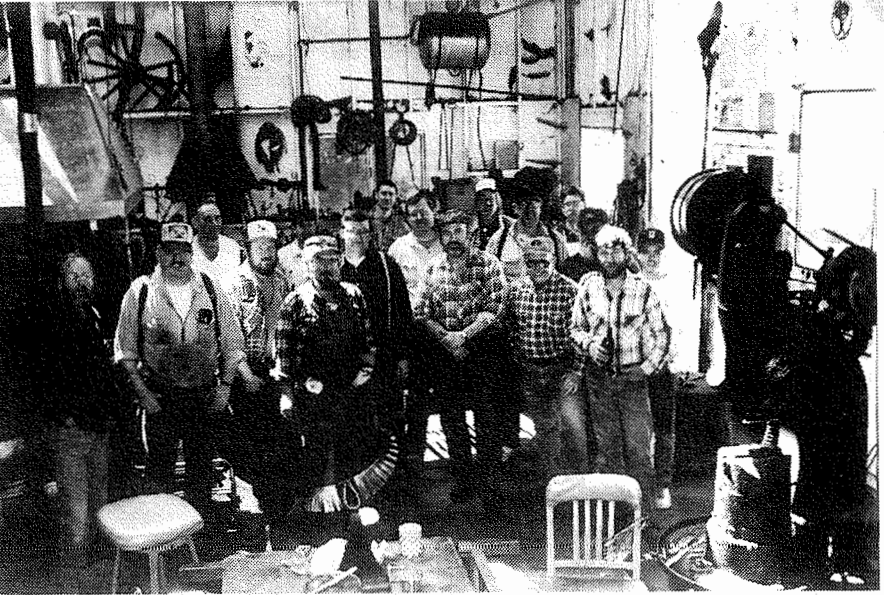
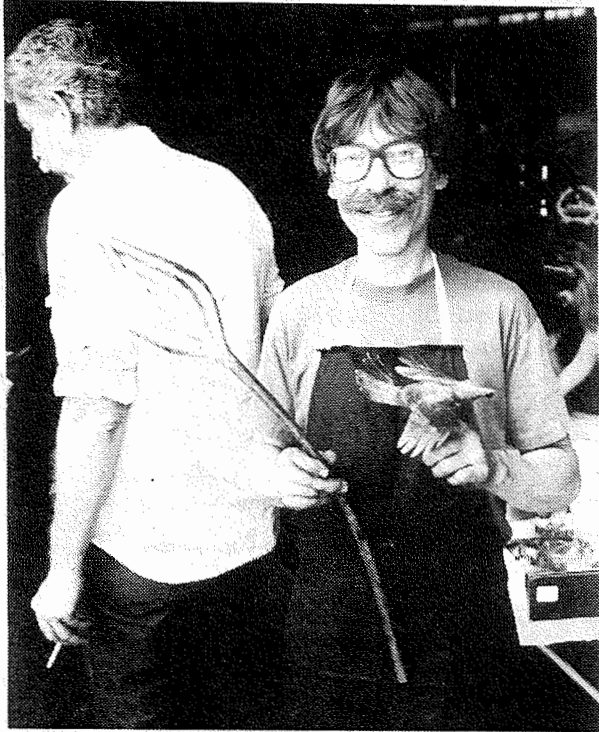


# Hot Iron News

CHAPTER OF ABANA

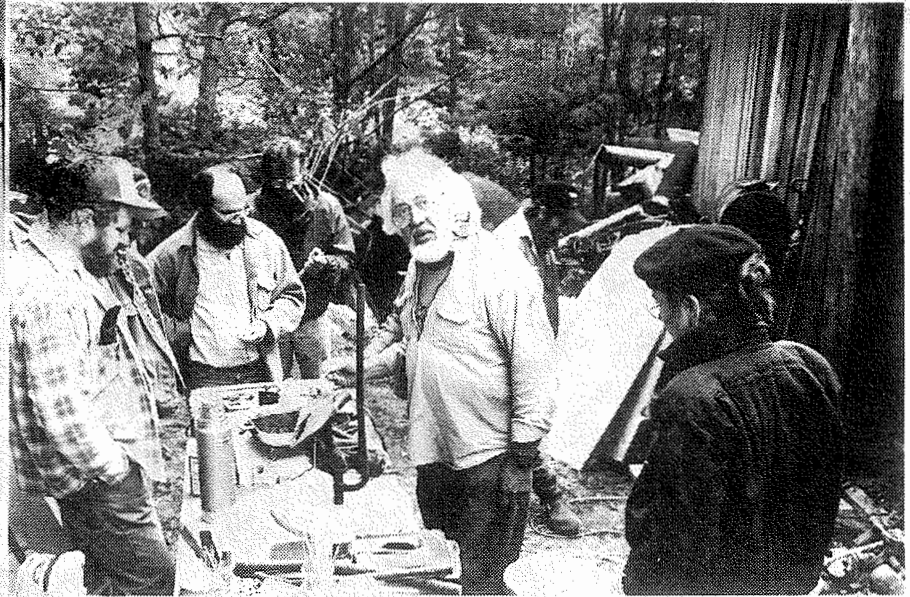
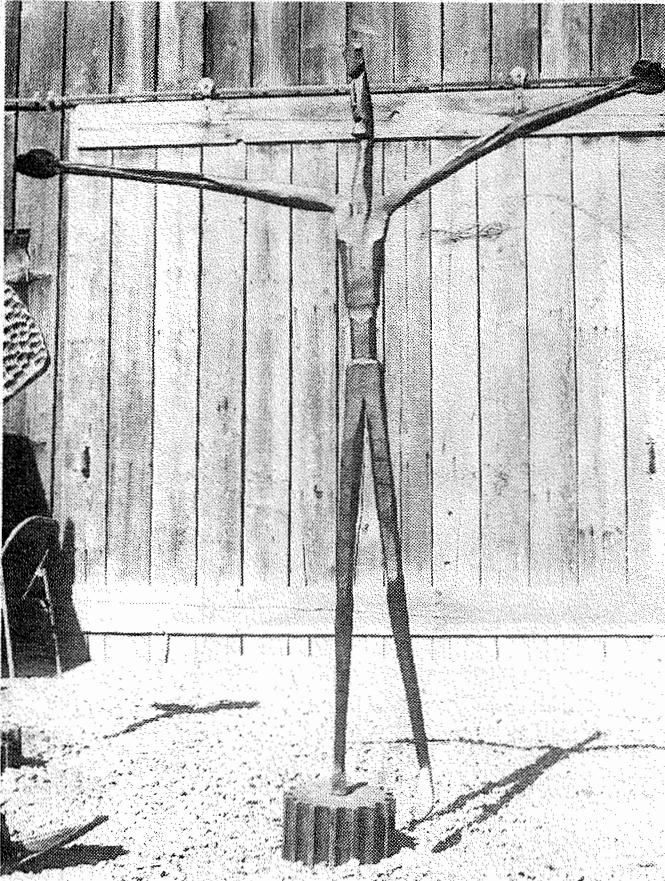
JULY, 1987 -- Voice of the Northwest Blacksmiths Association



IVAN BAILEY AT SPRING MEET

KNIFEMAKING WORKSHOP

EUGENE, OREGON



Casting Workshop - Mike Falk

N. W. B. A.  
Box 81041, Seattle, WA

1987 Officers and Board Members

President: Darryl Nelson  
36914 Meridian E.  
Eatonville, WA 98328  
206-832-6280

Phil Baldwin  
P.O. Box 71043  
Seattle, WA 98107  
206-284-9044

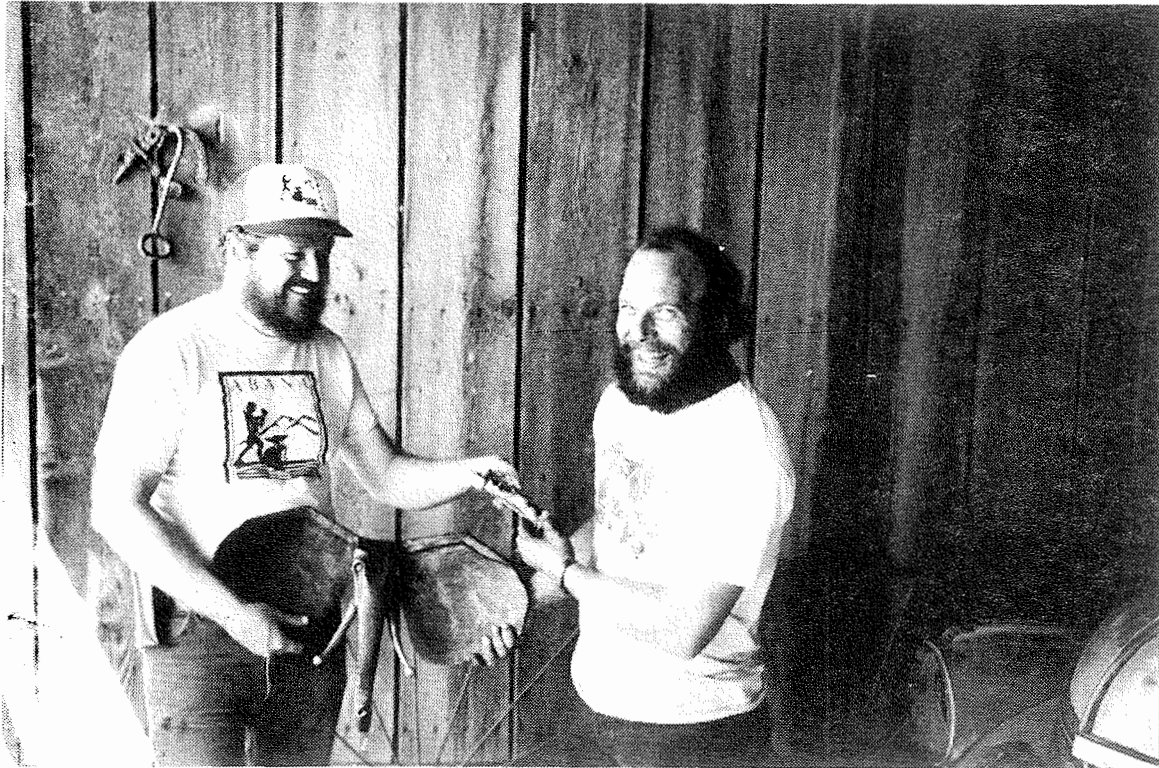
Vice-Pres.: Jerry Culberson  
East 220 Cronquist  
Allyn, WA 98524  
206-275-6769

Russ Jaqua  
1119 Blaine Street  
Port Townsend, WA 98368  
206-385-5272

Sec.-Treas: Howard Swanson  
5800 - 17th Ave. So.  
Seattle, WA 98108  
206-762-7123

Gene Chapman  
27449 Baywood Dr. N.E.  
Kingston, WA 98346  
206-297-2495

Editor: Terry Carson  
36914 Meridian E.  
Eatonville, WA 98328



Here are Darryl and Gene trading a small elephant for a beautiful damascus folding knife.

WHAT'S HAPPENING

We don't have much going on here until Tom Joyce comes up in October, but you should make an effort to take in the Western States Conference in Colorado in August.

In September the usual crew will be at the Western Washington Fair in Puyallup.

If we get about ten more interested parties we will have another novice workshop.

We have another Nahum Hersom workshop tentatively scheduled for late October. Don't be late signing up.

HAS HAPPENED

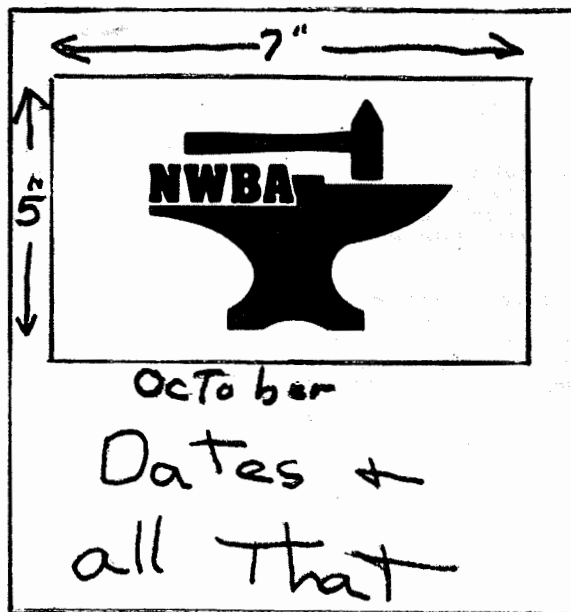
The spring gathering at Ike and Kathy Bays with Ivan Bailey was the usual good food and good time. Ivan showed us some new techniques and amazed us with his varied capabilities. We raised over \$800.00 for the National Ornamental Metals Museum and the Yellin Foundation at the auction.

LAST ISSUE IF 1987 DUES HAVE NOT BEEN PAID

1988 NWBA Calendar

We are trying to put together a 1988 NWBA calendar and need 5" x 7" dark pencil or pen and ink drawings of blacksmithing, metal crafts, etc. serious or humorous. Submitted drawings will be displayed at the fall meeting. So get your pens and pencils working. Bring drawings to the fall meeting or send to Gene Chapman 27449 Baywood Dr. NE, Kingston Wa. 98346 Please indicate if you want the drawings back.

The format will be:



## NOISE-INDUCED HEARING LOSS

The association between noises and hearing loss has been known for ages. The ancient Greeks expressed their dislike for noises by forbidding metalwork involving hammering and the keeping of roosters within the city limits. In the late eighteenth century, it was observed that coppersmiths and blacksmiths became hard of hearing as a result of the noise from their hammering. Noise-induced hearing loss occurs when a person is exposed to high-intensity noise over a prolonged period of time or to a very loud but brief noise or explosion. The site of damage is the fine nerve cells of the inner ear, or cochlea. Once these cells are damaged, hearing loss is permanent, and may worsen if exposure continues. The only way to deal with noise-induced hearing loss is to prevent it.

The perceived magnitude of sound is defined as loudness, which is a function of frequency measured in hertz(Hz) and intensity(amplitude) of noise measured in decibels(dB). Since the decible scale is exponential, 60 dB is 10 times as loud as 50 dB and 70 dB is 100 times greater than 50 dB. The following table lists some noise levels in various situations:

NOISE SOURCE	DECIBILE LEVEL
Loud rock music	120-130
Oxygen torch	121
Chain saw	110
Motorcycle	90
Garbage disposal	80
Television set	70
Normal conversation	50-60

Symptoms that may indicate noise-induced hearing loss include difficulty in communicating verbally at arm's length and head noise(tinnitus) after several hours at work in a noisy environment. The audiogram is the most widely accepted method used to document a hearing loss. Serial audiograms may show subtle changes over time in workers exposed to loud noises. The first indication of high frequency hearing loss usually is in the 3000 to 6000 Hz range. As hearing impairment progresses, a characteristic 4000 Hz notch occurs in the audiogram.

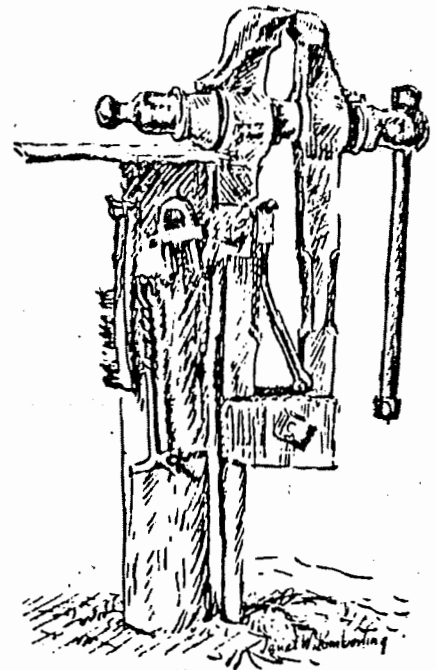
The following table lists the OSHA standard for permissible noise exposures:

DURATION(Hours/day)	dB
8	85
6	92
4	95
3	97
2	100
1	105
1/2	110
1/4	115

By law, an employer is required to implement a hearing conservation program for all employees if the noise level in the workplace is loud enough to interfere with easy conversation, or if it is above an eight-hour time-weighted average of 85 dB.

Prevention of noise-induced hearing damage may be accomplished by either modifying the noise source or altering the noise path through attenuating barriers; ear plugs, ear muffs, and helmets can significantly attenuate noise levels and thus lessen the chance of noise-induced hearing loss.

Hugh E. Eddy, M.D.



## 3rd Bi-annual Western States Blacksmithing Conference

---

Basalt, Colorado  
August 21-23, 1987

---

On those alternate years when ABANA does not hold a national conference the gap has been filled by the Western States Conferences. This year those of us in Colorado are very fortunant to have this action packed event right in our own state, just down the road from Aspen at the new shop of Myer's and Company Architectural Metals at Basalt.

A partial list of the demonstrators and activities planned will illustrate just how exciting this event is going to be.

**Francis Whitaker** of Aspen will conduct a master class for a few advanced smiths to build an archway for the town of Basalt. A competition will be conducted by Francis to determine the design of the piece. Information can be obtained from him at 1265 W. Bunny Ct. Aspen, CO 81611.

**Danlei Boone VII** of Greenbelt, MD will demonstrate the forging of floral forms and dragon heads.

**Don Hawley** of CA will demonstrate the use of large power hammers using the shop's 5B Nazel. Don will cover tooling and use of the big hammers as well as the design and use of gas forges.

**Lynton McKenzie** of Tucson, AZ will demonstrate traditional engraving from the tooling to the excecution. Lynton is internationally known for his ornate engravings of knives and guns.

**Joe Pehoski** of Salado, TX will share his wide experience with metal finishes from the most tradional to the most modern including gold leafing (gilding) and highlighting. Joe has had to learn to keep the rust off in one of the most corrosive environments in the US, the Gulf Coast region, so his knowledge should apply about anywhere.

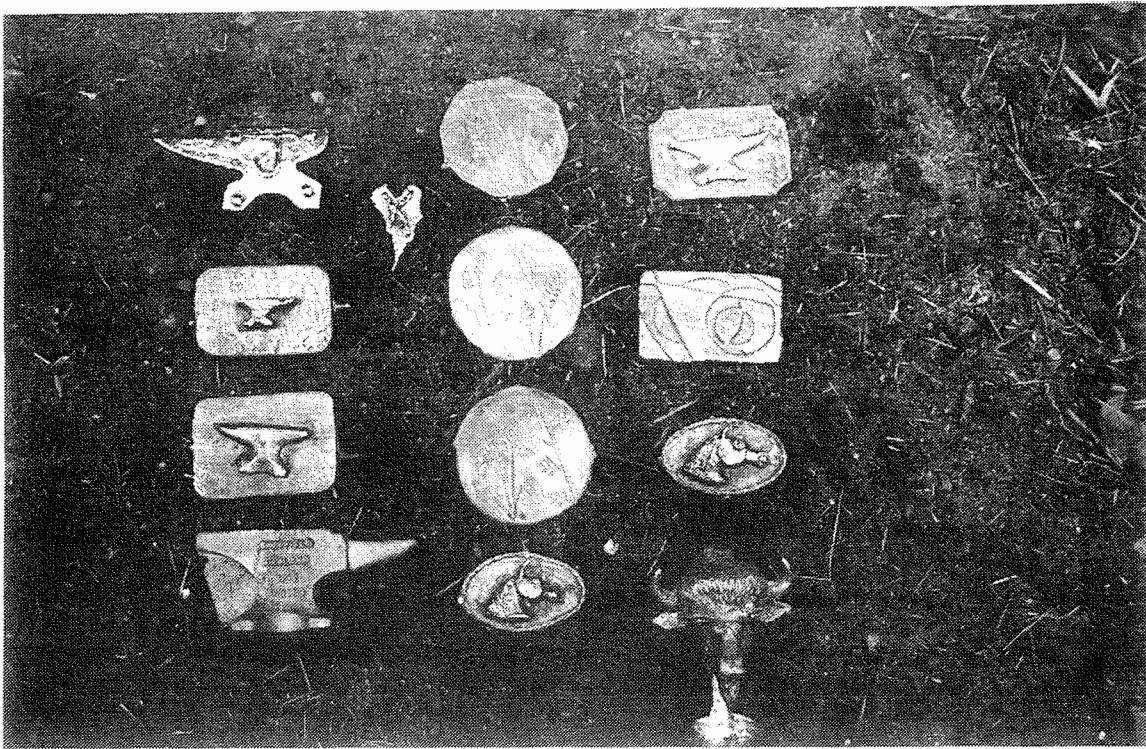
**Jerry Coe** of Berkeley, CA will show slides of his travels to the coppersmiths, tinsmiths, and blacksmiths of Asia.

**Ken Hambel** and **Mike Bondi** will work in the evenings under the big hammer to create a sculptural form that will probably show roots both in Italy and Germany where these two smiths have studied.

**Plus...** good food, good friends, good times.

The cost will be \$75.00 per person which will include the conference, Friday lunch, Saturday lunch and banquet, and finally Sunday lunch. For further information contact Michael W. Chisham at POB 82, Petaluma, CA 94953, (707) 664-9019.



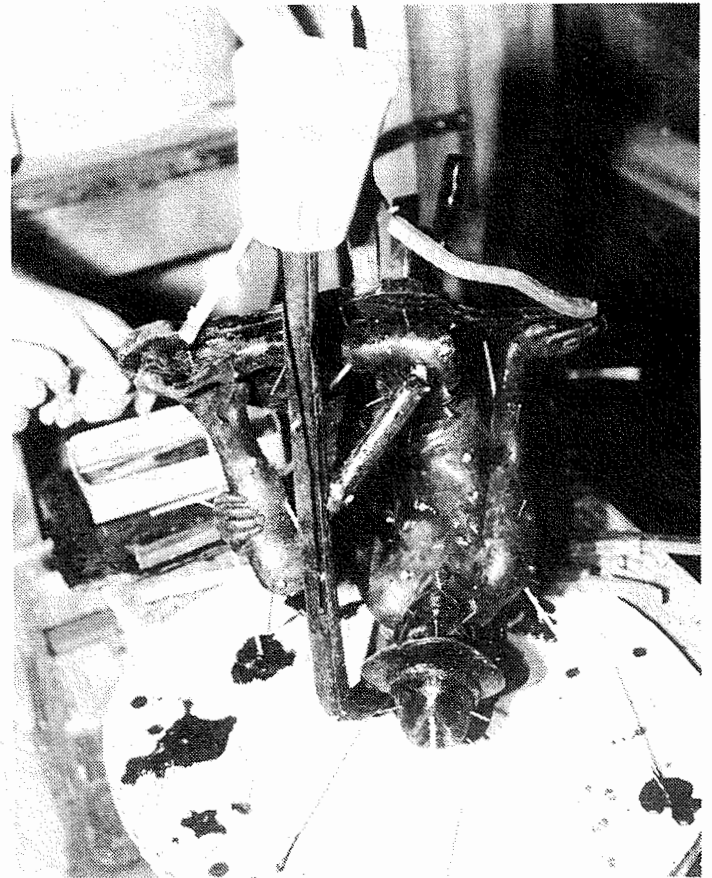
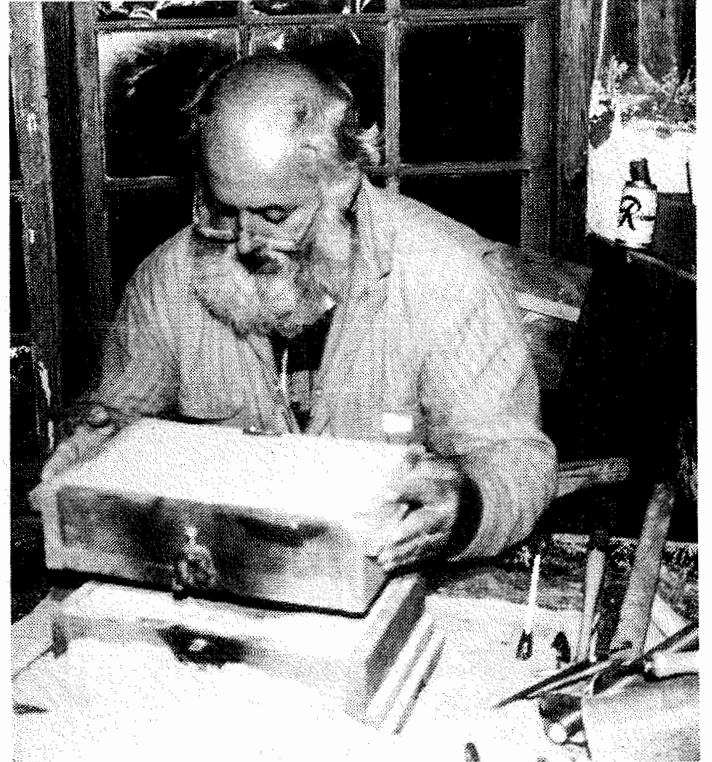
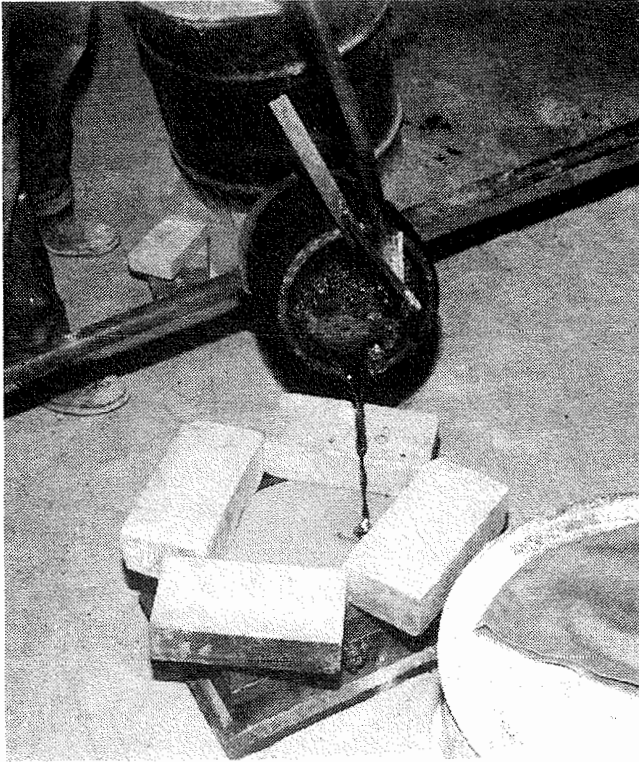


#### THE CASTING WORKSHOP

Our recent casting workshop with Mike Falk focused on the process of casting. Over the three days we were able to experience nearly every possible problem that could be encountered in casting. We had the best of learning experiences in that we were able to analyze the sometimes disappointing results of our efforts and we were able to try again. As Mike pointed out to us it was possible to seem to do everything properly and still turn out a poor cast. There isn't an exact formula to follow. What works for one foundryman may not work for the next man or even the next cast.

We learned much about the casting process. There was no pressure to produce a product for critique as there would have been in a university situation. The critiques focused on process, not on aesthetics and they were ongoing throughout the workshop. What we gained from our experience with Mike Falk were tools for the future - knowledge of a process and its variable, not a sense of magic or secrecy. We should all be capable of using that knowledge to pursue our own ideas and needs.

Karen Wagner

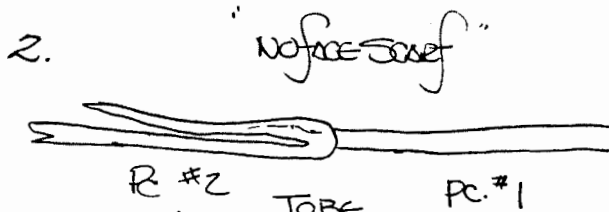
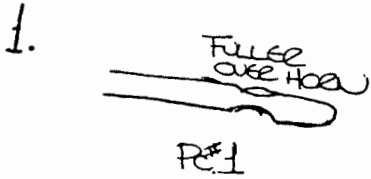


Photos - Lloyd Hedglin

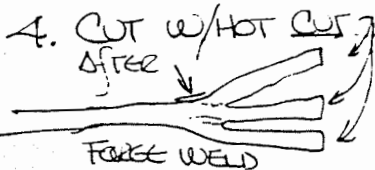
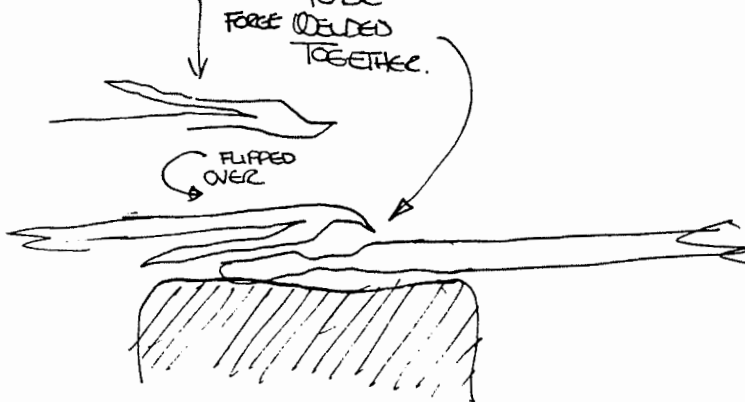
# Rose Leaf

Tuley Notes  
12 April '87

5/16" ROUND STOCK

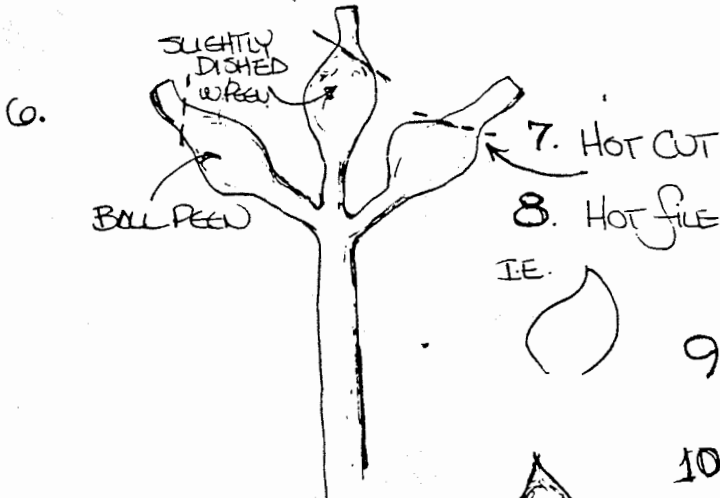
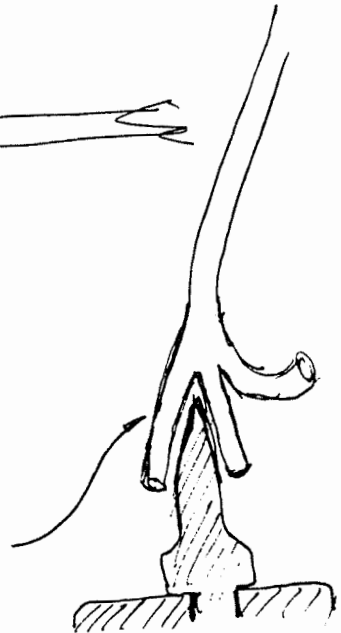


3. FLUX W/ BORAX BEFORE FULL WELD HEAT. GET RID OF HEAVY SCALE. REHEAT THEN FLUX AGAIN W/ EASY WELD REHEAT TO "SWEET", "BUTTER" LOOK



"IT'S ORGANIC & NOT ORGANIC GROWTH". Tuley

5. REHEAT, CLEAN, & RE FLUX & FINISH WELD & REFINE SHAPE!  
BEST HEAT = BOILING BORAX. (NO GAS FORGE)  
SA. PREP OPEN THE LITTLE WITCHERS" :Tuley



9. "GIVE SOME 'LIFE' TO IT, OVER THE HAIR."  
10. "THEN, GIVE IT 'SANTA FE CHARM' (HAMMER MARKS)."



WM MARTINEZ

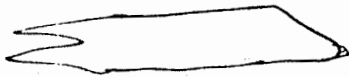


TURLEY WORKSHOP  
 12 APRIL ©  
 FIRE MT. FORGE  
 1987.  
 ESTOVILLE, WASH.

1/4" x 3/4" STOCK  
 MILD STEEL

BEVEL SCROLL

1. 1/2 x W of STOCK



ALMOST LIKE  
 MAKING SCARF.

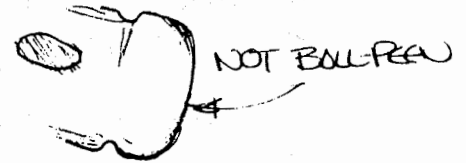
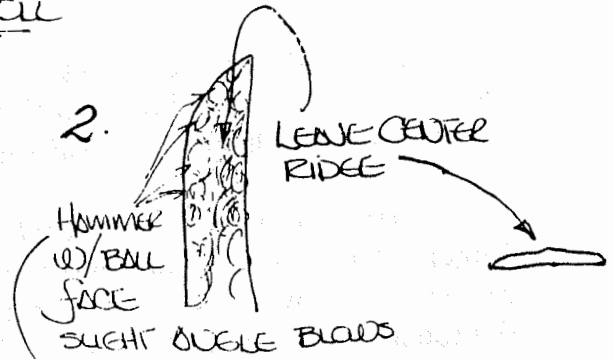
DECIDE NOW IF LEFT OR RIGHT  
 HAND SCROLL IS DESIRED.

3. FOLD IT UP THE HARD WAY,  
 ON EDGE!

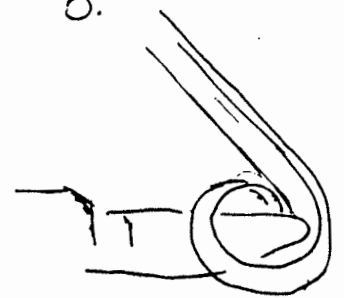


4. TAKE UP & COPE  
 MORE HEAT IS  
 REFINE THE INSIDE  
 OR NEGATIVE SPACE.

2. LEAVE CENTER  
 RIDGE



5.

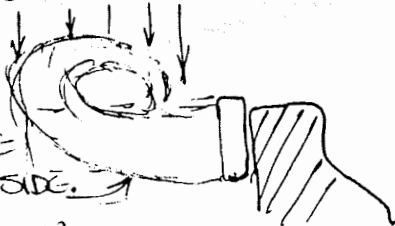


OLD TIME SHOP RULE:

"DON'T TALK TO WORKER DURING  
 WELDING HEAT!" (OR GIVE HIM  
 YOUR APRON) : TURLEY '87

6. VISE IT UP

MOVE INTO  
 SAME PLANE  
 @ STRAIGHT SIDE.  
 HOT! : TURLEY



7.



W. MARTINEZ

## HOT IRON NEWS BLADESMITH'S CORNER

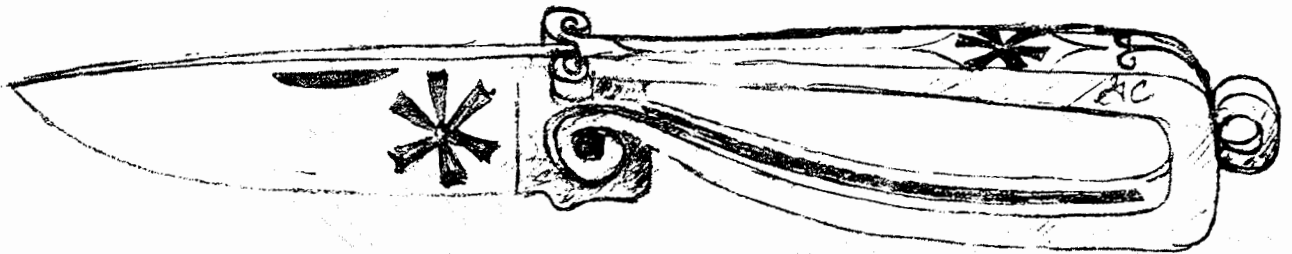
By Gene Chapman

As with all N.W.B.A. workshops, the May, 1987, Bladesmith Workshop was full of information, hands-on blade welding, forging and heat treating. The bulk of the twenty workshop students were Oregon folks, many of whom are new N.W.B.A. members -- Welcome Aboard!

I would like to stress the importance again of workshops. It's easy to read about bladesmithing and knifemaking, but there is no substitute for hands-on training.

After trading for several all metal frame pocket knives at the Eugene Knife Collectors Association show in April, I tried several experiments with simple metal frame pocketknives, and demonstrated one at Ike Bay's in June. Incidentally, I made one at the Bladesmith Workshop at Dave Thompson's late Saturday night and everything went smoothly.

Here is a drawing that may stimulate you to make your very own "blacksmith folding knife".

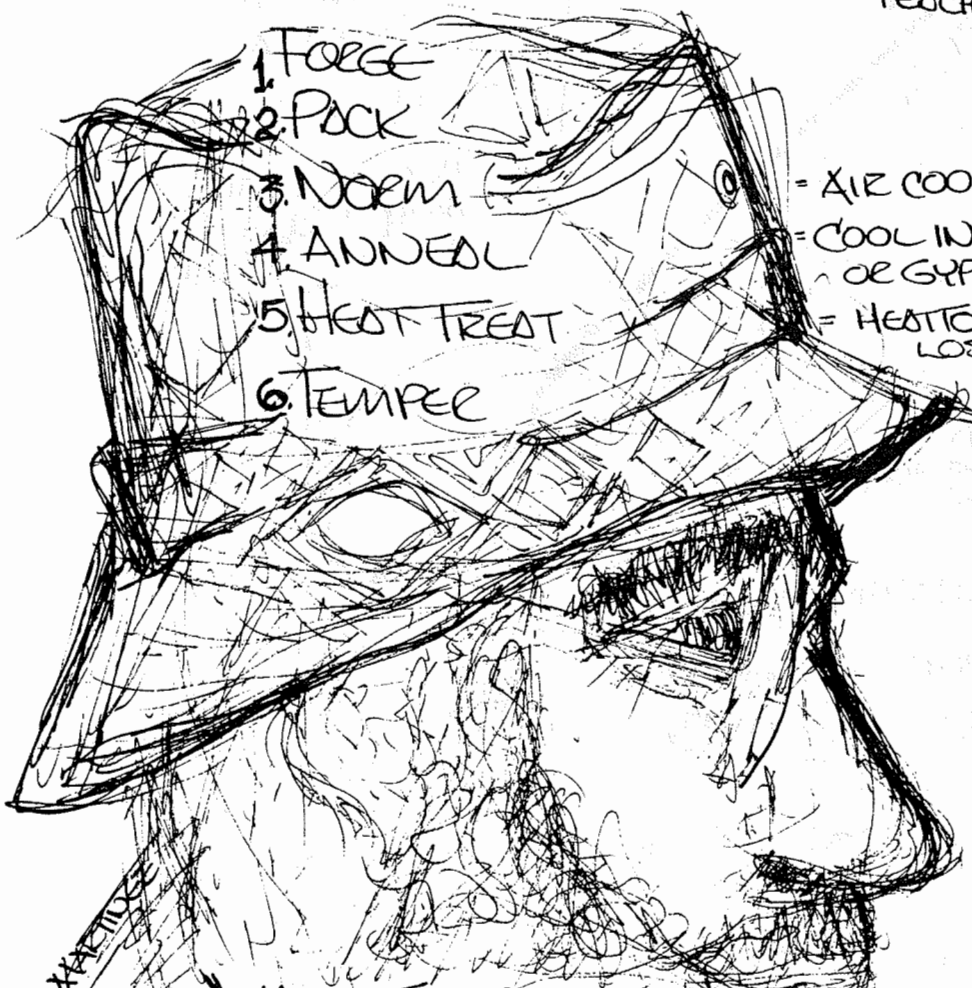


WAYNE GOD (DAD) 17 MAY 87

① EUGENE, ORE.

## KNIFE MAKING STEPS

"WIDELY RECOGNIZED AS MASTER KNIFE-MAKER & MASTER TEACHER:" WXX XX.



1. FORGE

2. POCK

3. NORM

4. ANNEAL

5. HEAT TREAT

6. TEMPER

= AIR COOL

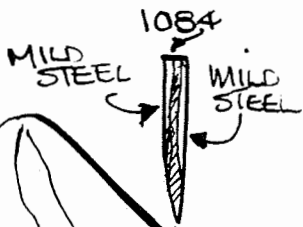
= COOL IN VERMICULITE OR GYPSUM CRASHES.

= HEAT TO CRITICAL TEMP. LOSS OF MAGNETISM

WXX XX

"WHAT I SAY IS NOT ALWAYS WHAT I MEANT,  
WHAT YOU HEAR ME SAY IS NOT ALWAYS WHAT I SAID!"

WAYNE GODDARD, COUTD.



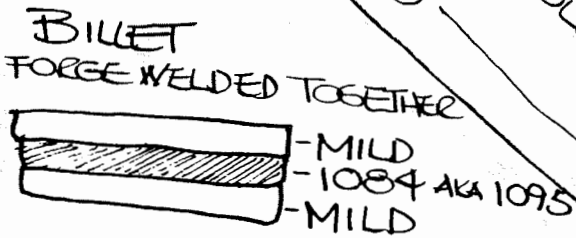
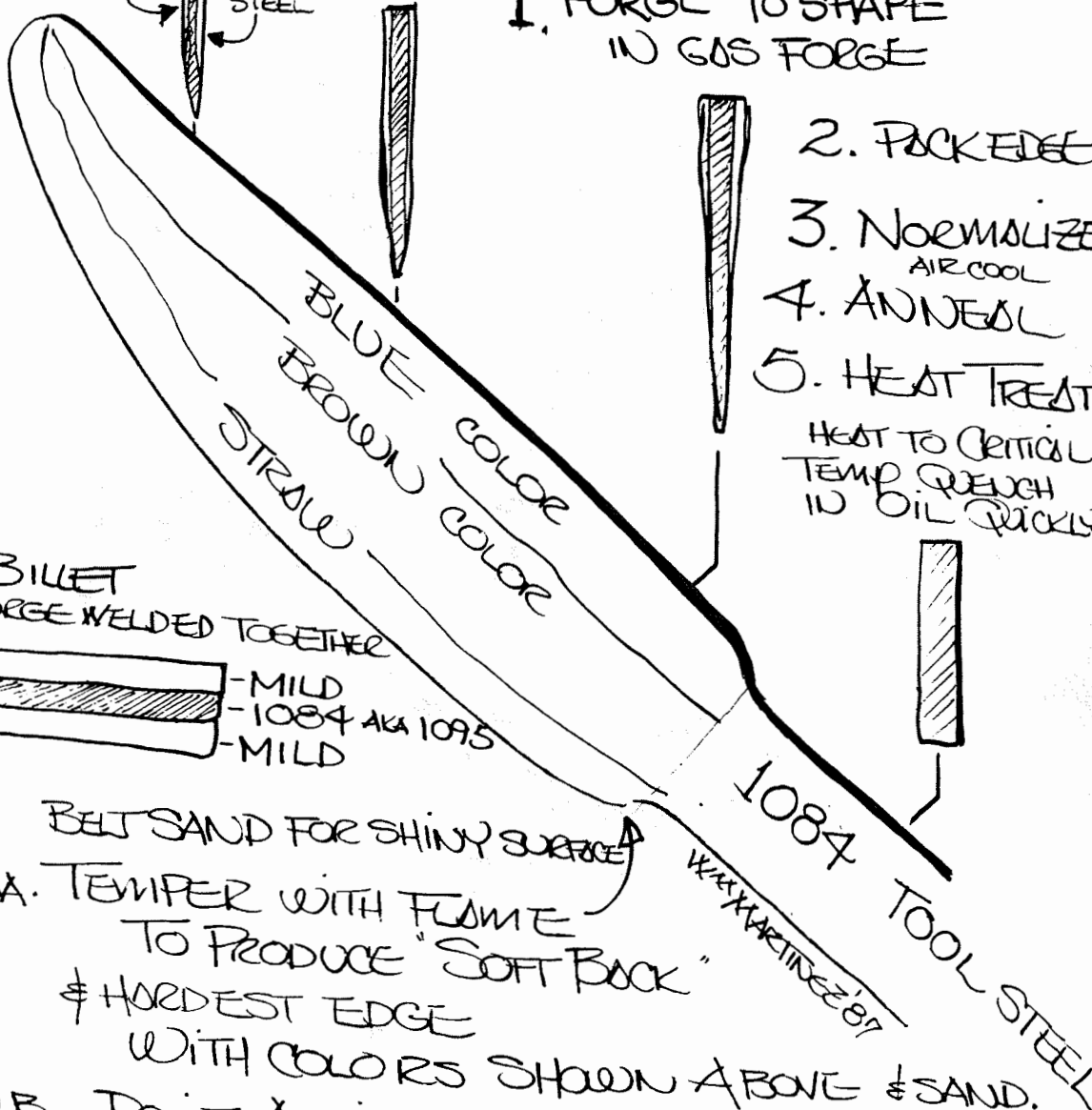
1. FORGE TO SHAPE  
IN GAS FORGE

2. PACK EDGE

3. NORMALIZE  
AIR COOL

4. ANNEAL

5. HEAT TREAT  
HEAT TO CRITICAL  
TEMP. QUENCH  
IN OIL QUICKLY



BELT SAND FOR SHINY SURFACE

6A. TEMPER WITH FLAME  
TO PRODUCE "SOFT BACK"  
& HARDEST EDGE

WITH COLORS SHOWN ABOVE & SAND.

6B. DO IT AGAIN & SAND

6C. AND AGAIN & SAND

6D. PUT IT IN A 325°F OVEN  
FOR 1 HOUR TURN OVEN  
OFF. OBSERVE COLOR  
SHOULD BE "STRAW" ALL  
OVER.

Knife Workshop  
GODDARD, CHAPMAN  
& THOMPSON

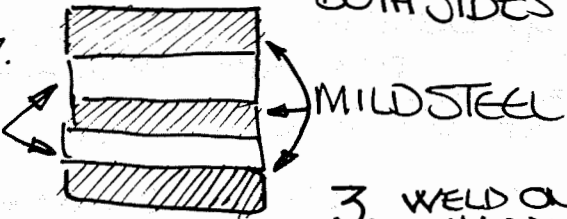
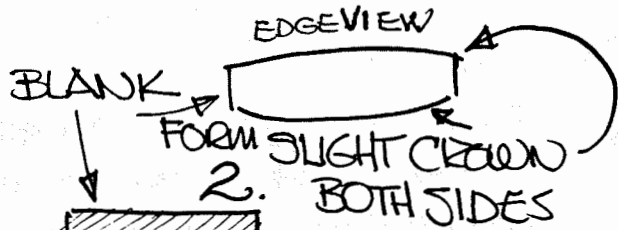
① EUGENE 1697  
MAY, 1987.





DAMASCUS  
ALA GENE CHAPMAN 5/87.

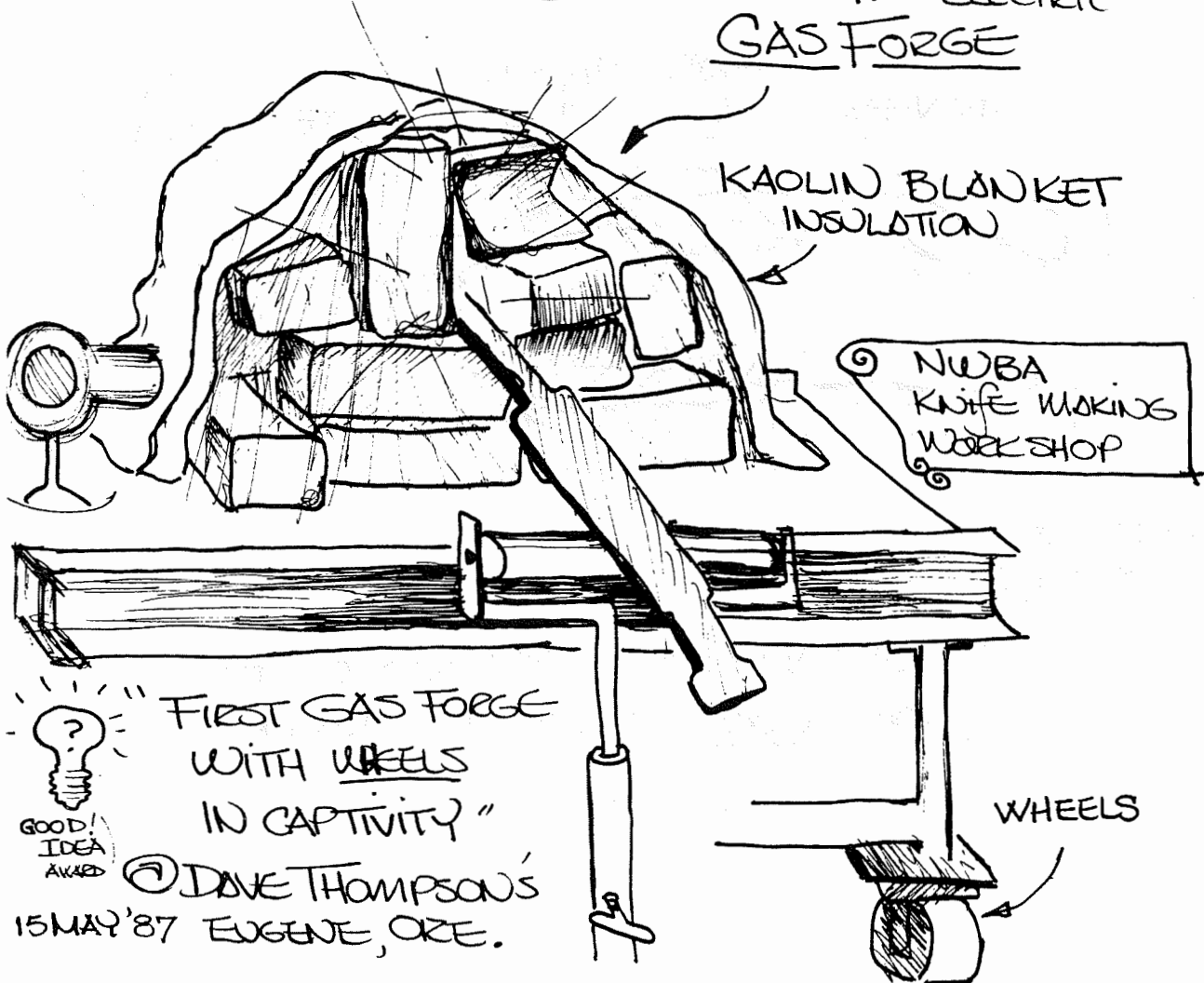
MODEL 400  
70% NICKEL  
30% COPPER



4. WELD UP THE CENTERS  
ELECTRIC

GAS FORGE

HYDROUS BORAX FOR FLUX.



"FIRST GAS FORGE  
WITH WHEELS  
IN CAPTIVITY"  
© DAVE THOMPSON'S  
15 MAY '87 EUGENE, ORE.

GOOD!  
IDEA  
AWARD

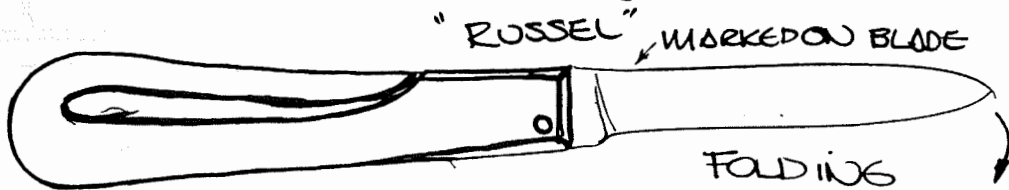


"GOOD IDEAS AWARDED TO ?"

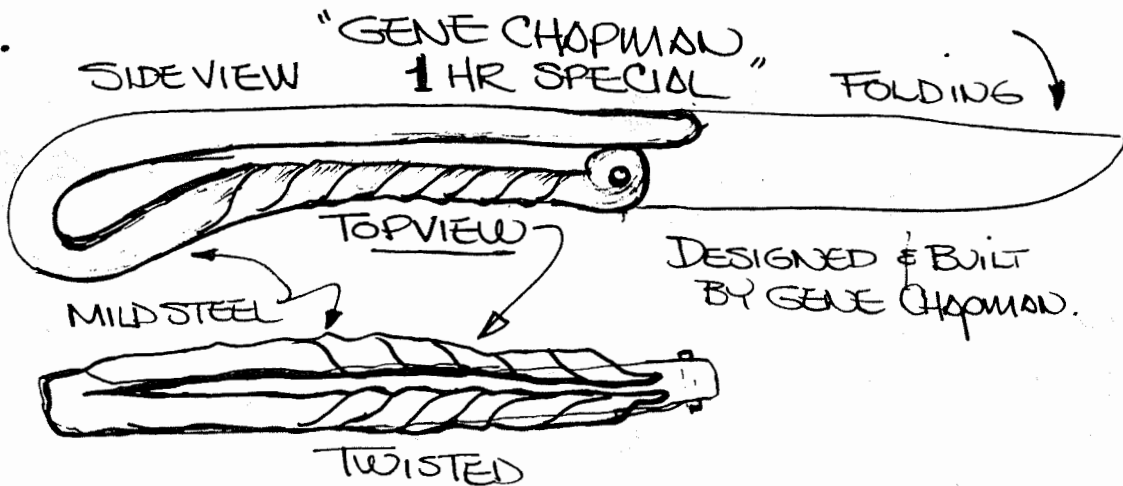
KNIFE MAKING NOTES  
MAY 1987 WAXXX

GENE CHAPMAN, A GIFTED CRAFTSMAN, KNIFEMAKER, & THINKER. HE'S ABLE TO CUT THROUGH THE CONVENTIONAL (BULLSHIT) APPROACH TO DESIGN & TECHNIQUES AND SIMPLY SOLVE PROBLEMS. HE IS BEST KNOWN FOR CONVERTING 1,300,500+ HARDEDGED COAL FORGE BLACKSMITHS TO GARAGE SALE HAIR-DRYERS & PROPANE GAS FORGES WITH RUSP. CAT EASE!

1. VERY OLD POCKET KNIFE ACQUIRED BY G. CHAPMAN.



2.



MISCELLANEOUS

RESOURCE: MISC, KNIFEMAKING

EXOTIC WOODS, FOR HANDLES, ETC.

GILMORE WOOD, PORTLAND, OREGON

A VISIT RECOMMENDED: WAX MARTINEZ 5/87.

# SELL - BUY - SWAP

HAY LOOK, SOME GREAT STUFF

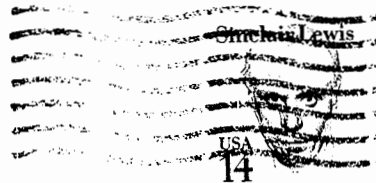
2 Large coal forges, blower, fire-pot  
the works, only 275.00 OBO each  
2 Champion 400 blowers one set up to  
run electric 150.00 OBO each  
At least 2 Leg vices 100.00 OBO each  
All these and some great accessories  
in ready to go to work condition  
Corky 206 432 1468

S-2 Chisel Blanks - 3/4" octagon by  
8" long - \$ 2.00 each.  
Contact Fire Mtn. Forge  
1-206-832-6280

For sale;  
Swage block 15" x 16" x 11"  
Edwards manual shear  
Approx. wt. 800# (no. 5)  
Call 848-4903 Jensen

19" forge and blower  
swage block anvil and  
some hand tools  
Marge Johnson  
206-927-9239  
Federal Way, Wa. 98023

ALOHA FELLOW  
VOLCANOE INHABITANTS  
I'VE MOVED OVER  
TO THE ISLANDS  
HERE TO THE  
LAND OF SUN +  
MONEY. FRANCIS  
USED TO HAVE A  
CONDO HERE NEXT  
TO OUR VOLLEYBALL  
COURT. HELLOS TO  
ALL. BANG OUT  
SOME DECIBEL LEVELS...



FIREY MOUNTAIN BOYS  
 36914 MERIDIAN E.  
 EATONVILLE  
 WA. 98328

J CARL

NORTHWEST BLACKSMITHS ASSOCIATION  
PO BOX 81041 SEATTLE WA 98109

MEMBERSHIP APPLICATION:    New    |    |    Renewal    |    |    Correction    |    |

Name \_\_\_\_\_ Date \_\_\_\_\_

Address \_\_\_\_\_

City \_\_\_\_\_ State \_\_\_\_\_ Zip \_\_\_\_\_

Phone (\_\_\_\_) \_\_\_\_\_ - \_\_\_\_\_ Firm(optional) \_\_\_\_\_

Please enclose your remittance for \$12.00, payable to: NWBA

LAST ISSUE IF 1987 DUES  
HAVE NOT BEEN PAID

**Northwest Blacksmith's Association**  
P.O. Box 81041  
Seattle, WA 98108

